

# maxell

Within, the Future

Maxell, Ltd. 5030 Totsuka-cho, Totsuka-ku Yokohama, 244-0003, Japan [http://biz.maxell.com/en/display\\_equipment/](http://biz.maxell.com/en/display_equipment/)

香港日立有限公司

總辦事處及維修服務部 香港新界沙田安睦街28號永得利中心18樓 電話：(852) 2113 8883 維修服務熱線：(852) 2753 5386  
澳門維修服務部 澳門羅拉士大馬路富大工業大廈4字樓F座 電話：(853) 2871 9614  
日立查詢熱線：2770 0377 [www.hitachi-hk.com.hk](http://www.hitachi-hk.com.hk)



Preliminary

# Lecture Capture Station MA-XL1

**maxell**  
Within, the Future

## Maxell's Integrated Lecture Capture Solution





**Students can focus on lectures.  
Teachers can engage students  
more easily and effectively.**







# Teacher Friendly Multifunctional Tool for Making Lectures.



By connecting to interactive projectors or interactive flat panel displays, you can operate MA-XL1's key features through the intuitive, user-friendly on-screen icon menu.

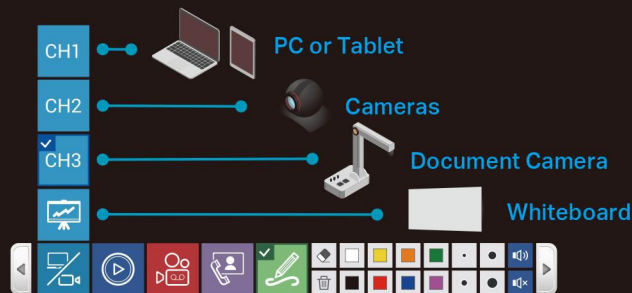
\*3 We recommend pre-test before purchase. HID USB mouse also supported.



## Interactive Content Switching

On-screen icons allow you to switch content during the lesson. (10 input terminals)

\*1 Output images from the "MONITOR OUT" or "HDMI OUT" are converted to H.264. Sound channels are isolated from image switching. Sound channel output can be set separately by administration menu. MA-XL1 does not support HDCP.  
\*2 CH1 is recommended for PC input and CH2/CH3 for camera input use.

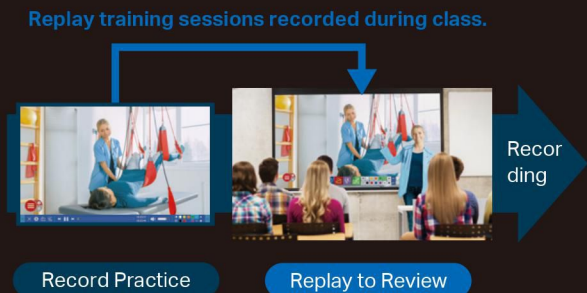


## Instant Playback

You can play recorded video contents by selecting the corresponding thumbnail from the index.



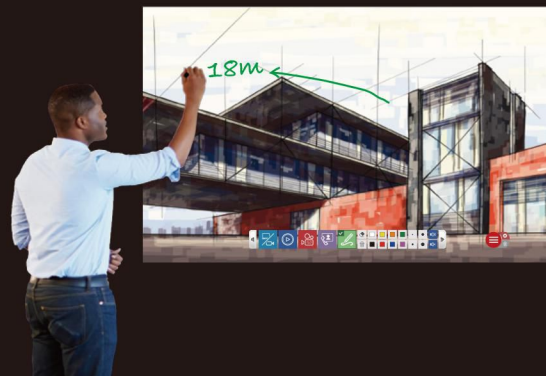
You can also replay an earlier part of the ongoing recording session - whilst still recording.



## Interactive Whiteboard

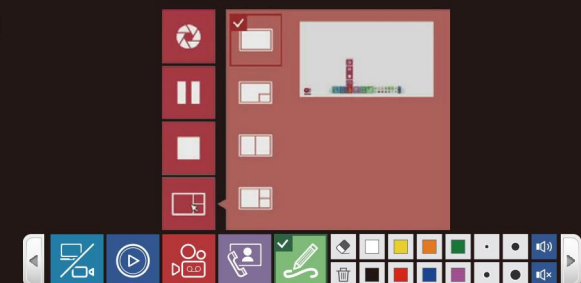
Make notes and drawings on the main screen for any input channel; save the drawing independently for each channel.

\*3 Dependent on connected interactive display. We recommend pre-test before purchase. HID supported USB mouse can also be used for this feature.



## Recording

Recording and screen shot capture is easy, just touch the icon. Change the recording layout mid-lesson.



# Student Friendly Learn Whenever You Want, Wherever You Are

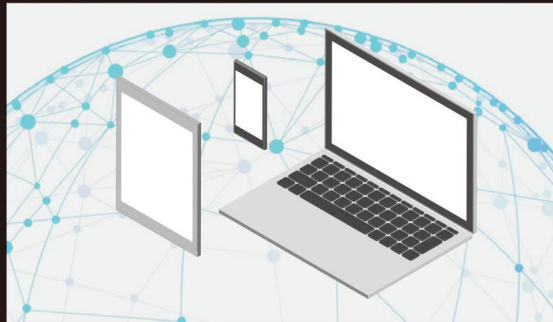


## Streaming / Uploading

Concentrate on lectures, rather than wasting time taking notes. Watch uploaded lectures on the cloud server whenever you need. Through live-streaming, attend your class from home or anywhere else. RTMP streaming protocol supports widely-used third party streaming services such as Youtube. MA-XL1 is also compatible with FTP/SFTP supported LCS cloud services such as Kaltura.



\*4 RTMP live-streaming requires a server or cloud services that supports RTMP protocol. Upload function requires a server that supports FTP or SFTP protocol.



## LMS Integration / Cloud Service Integration

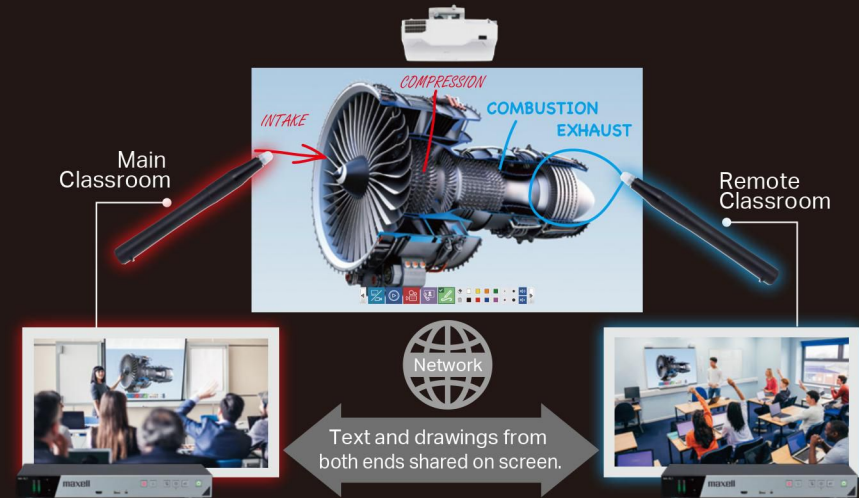
MA-XL1 can be integrated with existing Learning Management System (LMS) portals such as Moodle, to facilitate students' easy access to uploaded videos.

\*5 Level of integration may vary depending on LMS provider.

# Remote Classroom Optimized Connecting Two Remote Locations to One



## Remote Classroom Collaboration



Share the same interactive screen with a remote classroom and share notes and drawings on the shared screen from both rooms. You can have a lesson with your students thousands miles away as if they were in the same classroom.

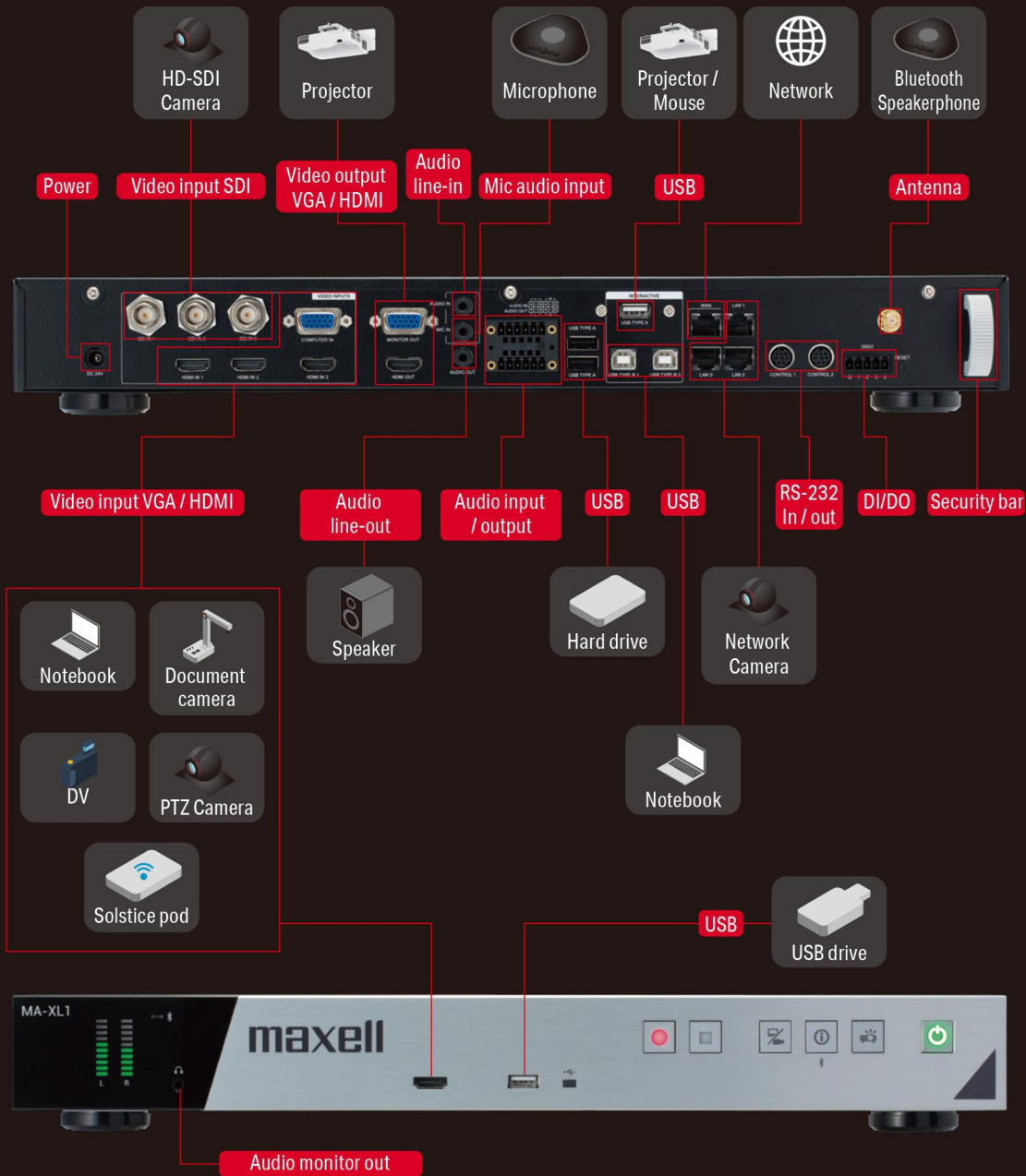
\*6 Up to 100 client MA-XL1s can be registered on a single host MA-XL1. Remote Classroom sessions are 1-to-1 only. Only one Remote Classroom session can be held at a given time. Performance is dependent on network environment. Please contact Maxell representative or agent to discuss network requirements and performance considerations. We recommend pre-test before purchase.

## Other User Friendly Features

- Operate with your smartphone, tablet or with USB mouse.
- Connect your smartphone to use it as a camera.
- Teachers can control their PC through the connected interactive screen.
- Automatically create indexes with titles and thumbnails on recordings by capturing the PowerPoint slide.\*9 \*9 Windows PC (Windows 7 or higher) and PowerPoint 2006 or higher is required.
- Scheduled recordings compatible with third party schedulers (Outlook, Google Calender, etc).



## Terminals



## SPEC

Model name	MA-XL1	
Mechanical	Form Factor	Standalone / Rack Mount
	Weight	3,050 g
	Dimension	430 × 208 × 60mm
Video Inputs	VGA	1
	HDMI	4
	SDI	3
Video Outputs	Resolution -support	720P up to 1080P (60)
	VGA	1
	HDMI	1
Audio Inputs	HDMI	4
	Audio-in (3.5mm)	1
	MIC-in (3.5mm)	Mono
	Phoenix Plug 1 × 6	1
	Bluetooth RX *8	(Mono)
	HDMI	1
	Headset-out (3.5mm)	1
Audio Outputs	Audio-out (3.5mm)	1
	Phoenix Plug 1 × 6	1
	Bluetooth TX *8	1
	WAN	1
	LAN	3
Ethernet	Type-A	4
	Type-B	2
	Control	CONTROL1 (RS232-out)
CONTROL2 (RS232-in/out)		1
DIDO Phoenix Plug 1 x 5		1
Status Power (GREEN/RED)		1
Streaming Inputs	RJ-45 / IP	3
	Streaming Format	RTSP/RTP/ RTMP
	Video Format	H.264 High/Main/Baseline
Streaming Outputs	Audio Format	AAC-LC
	Max. Channels	3
	Streaming Format	RTMP/RTP
Storage	Video Format	H.264 High/Main/Baseline
	Audio Format	AAC-LC
	Supported Resolution	320x240 to 1080p (30)
	Supported Bitrate	300kbps up to 4Mbps
	Max. Channels	2
	Internal HDD Capacity	1TB
	Storage File Format	MP4
Power	External Storage	Yes via USB Type A
	Export Files	Mixed × 1
Reset	Independent × 3	
	Reset Button	1
Included Accessories	Power adaptor, Power cord, Bluetooth Antenna, Balance line connector (2 units), DIDO connector, USB number keyboard stickers, Rack mount bracket (1 pair) + M4 x 6mm screw(6pcs), User's manual (concise), URL sheet	

\*8 Bluetooth microphone/speaker may not be suitable to record or reproduce high quality audio contents.

- Kaltura is a trademark of Kaltura Inc.
- Moodle is a trademark registered by Moodle.
- Youtube is a trademark of Google LLC in the United States.
- Powerpoint is a trademark of Microsoft Corporation.
- Internet Explorer is a trademark of Microsoft Corporation.

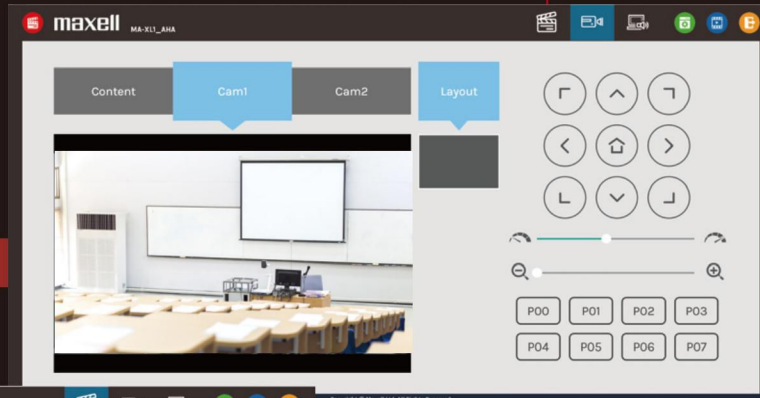
## Administrator's Screen Example

# Control & Setup from Web Browser

\*10 Internet Explorer 11 or higher is recommended. Some functions such as video preview may not be supported with other browsers.

## During Lecture

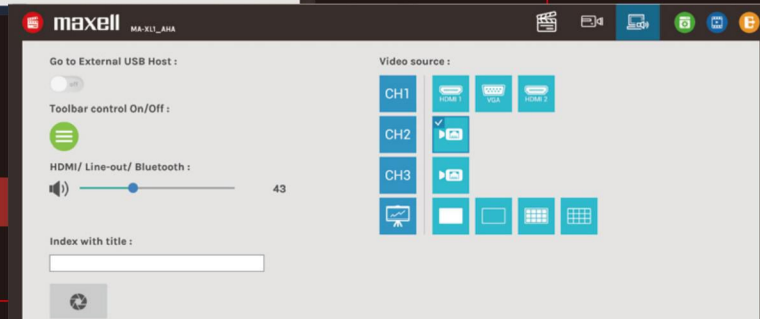
### Real Time Camera Control



### Layout control & Superimpose

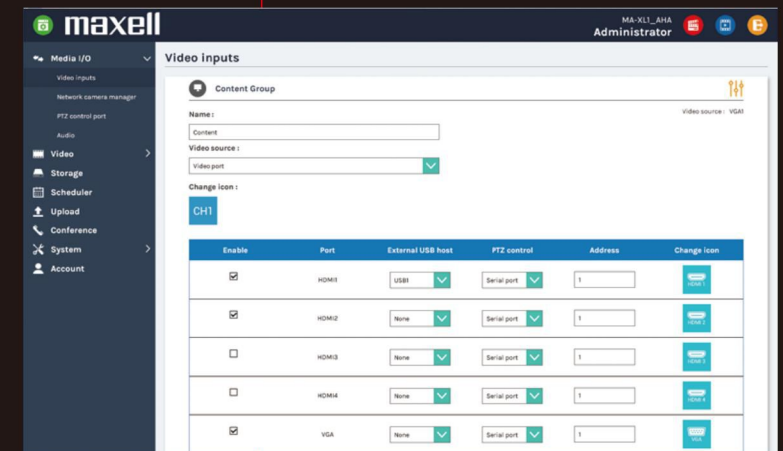


### CH Switching & Menu Control



## At Installation

### CH Source Assignment



### Upload Setting

